

Adopted from part of the aerial photograph taken by the Survey and Mapping Office of Lands Department at a flying height of 6,000 feet, photo No. E070963C, dated 3 October 2019.  
摘錄自地政總署測繪處於2019年10月3日在6,000呎飛行高度拍攝之鳥瞰照片，編號為E070963C。

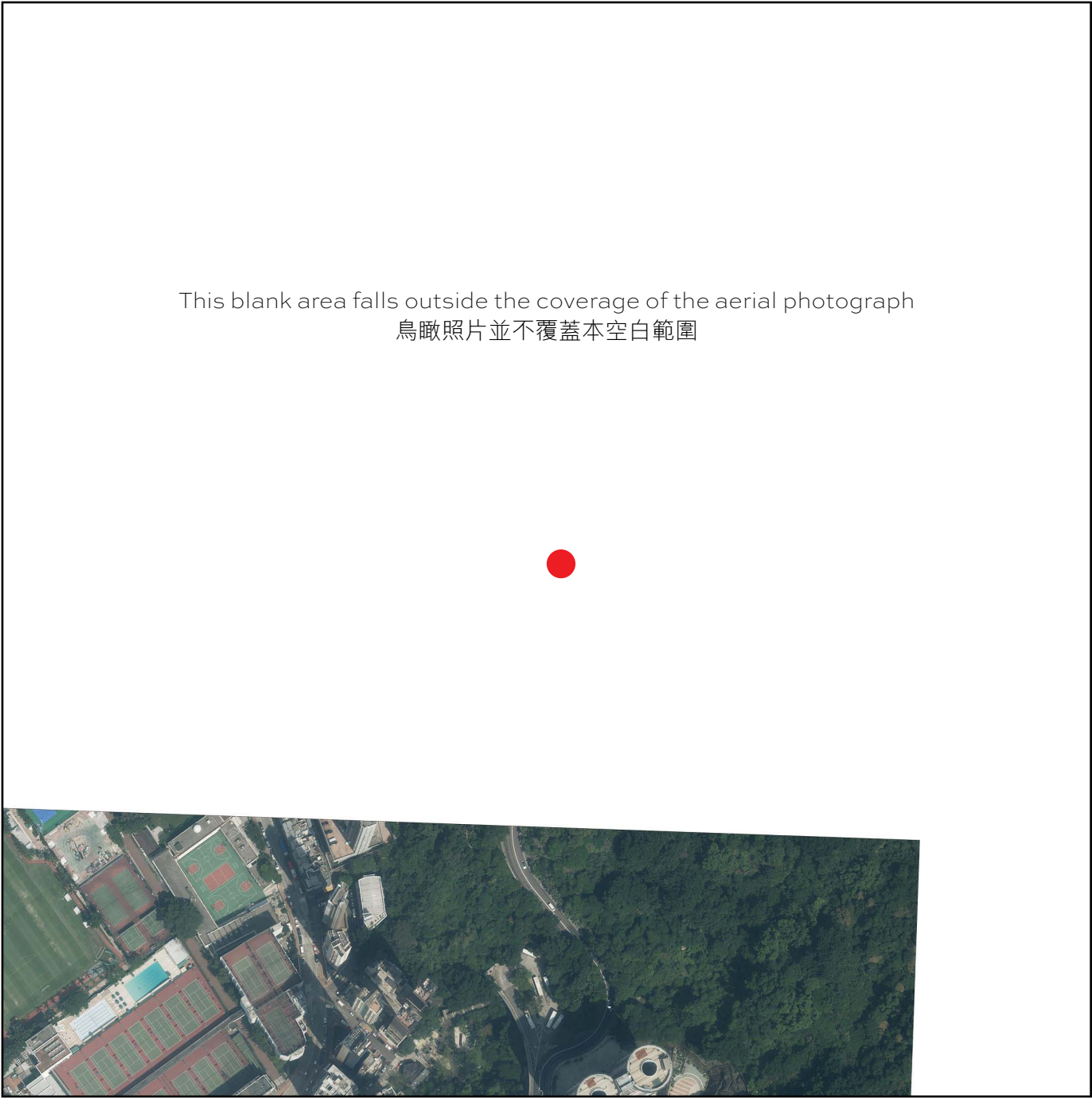


This blank area falls outside the coverage of the aerial photograph  
鳥瞰照片並不覆蓋本空白範圍

● Location of the Development  
發展項目的位置

Survey and Mapping Office, Lands Department, The Government of HKSAR © Copyright reserved - reproduction by permission only.  
香港特別行政區政府地政總署測繪處©版權所有，未經許可，不得複製。

Adopted from part of the aerial photograph taken by the Survey and Mapping Office of Lands Department at a flying height of 6,000 feet, photo No. E071229C, dated 3 October 2019.  
摘錄自地政總署測繪處於2019年10月3日在6,000呎飛行高度拍攝之鳥瞰照片，編號為E071229C。

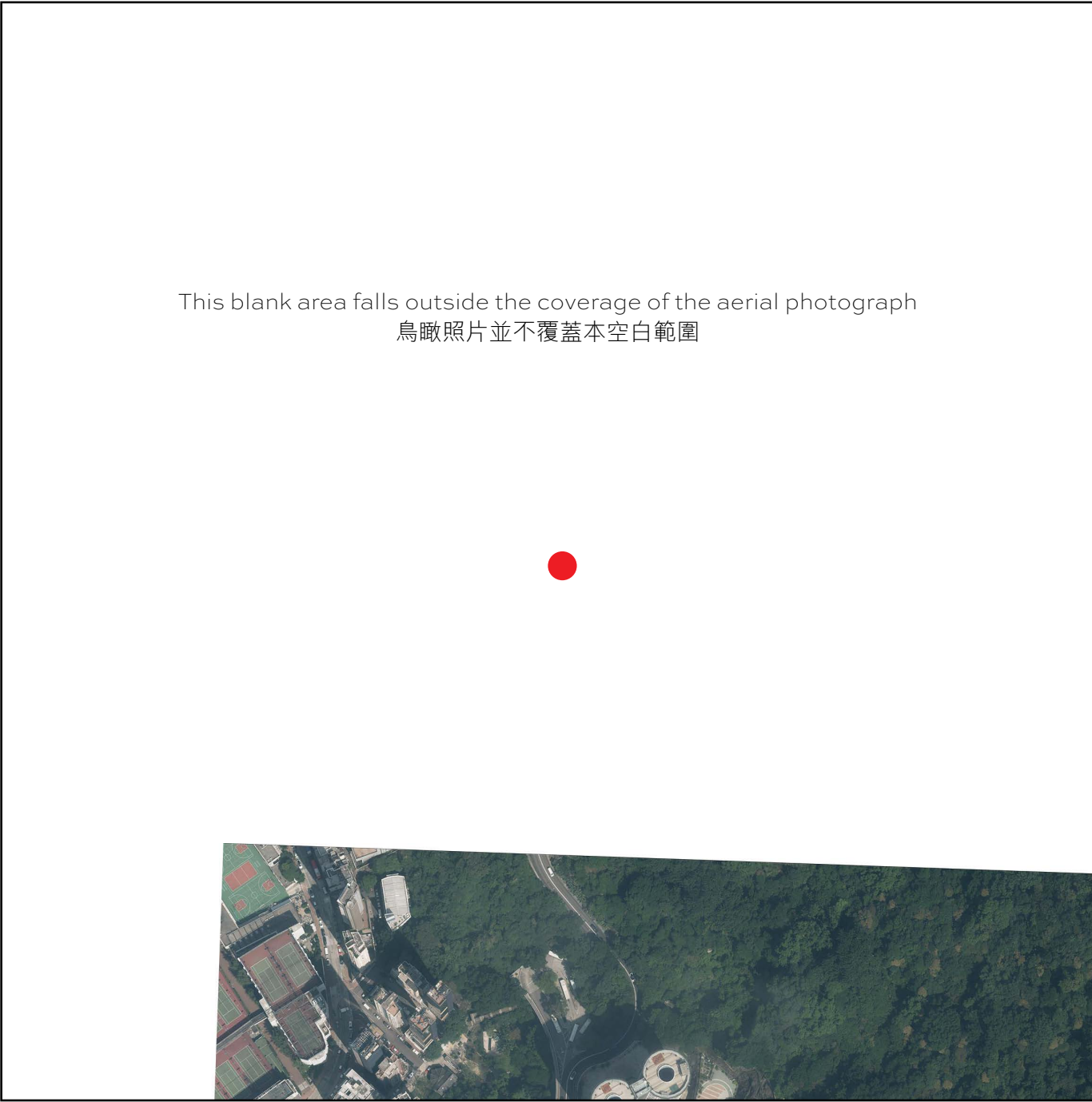


Notes :  
1. The aerial photographs are available for free inspection during normal office hours at the sales office.  
2. Due to technical reasons as a result of the irregular boundary of the Development, the aerial photographs have shown more than the area required under the Residential Properties (First-hand Sales) Ordinance.

備註：  
1. 該鳥瞰照片存於售樓處，於正常辦公時間內供免費查閱。  
2. 因發展項目的不規則界線引致的技術原因，鳥瞰照片所顯示的範圍多於《一手住宅物業銷售條例》所要求。



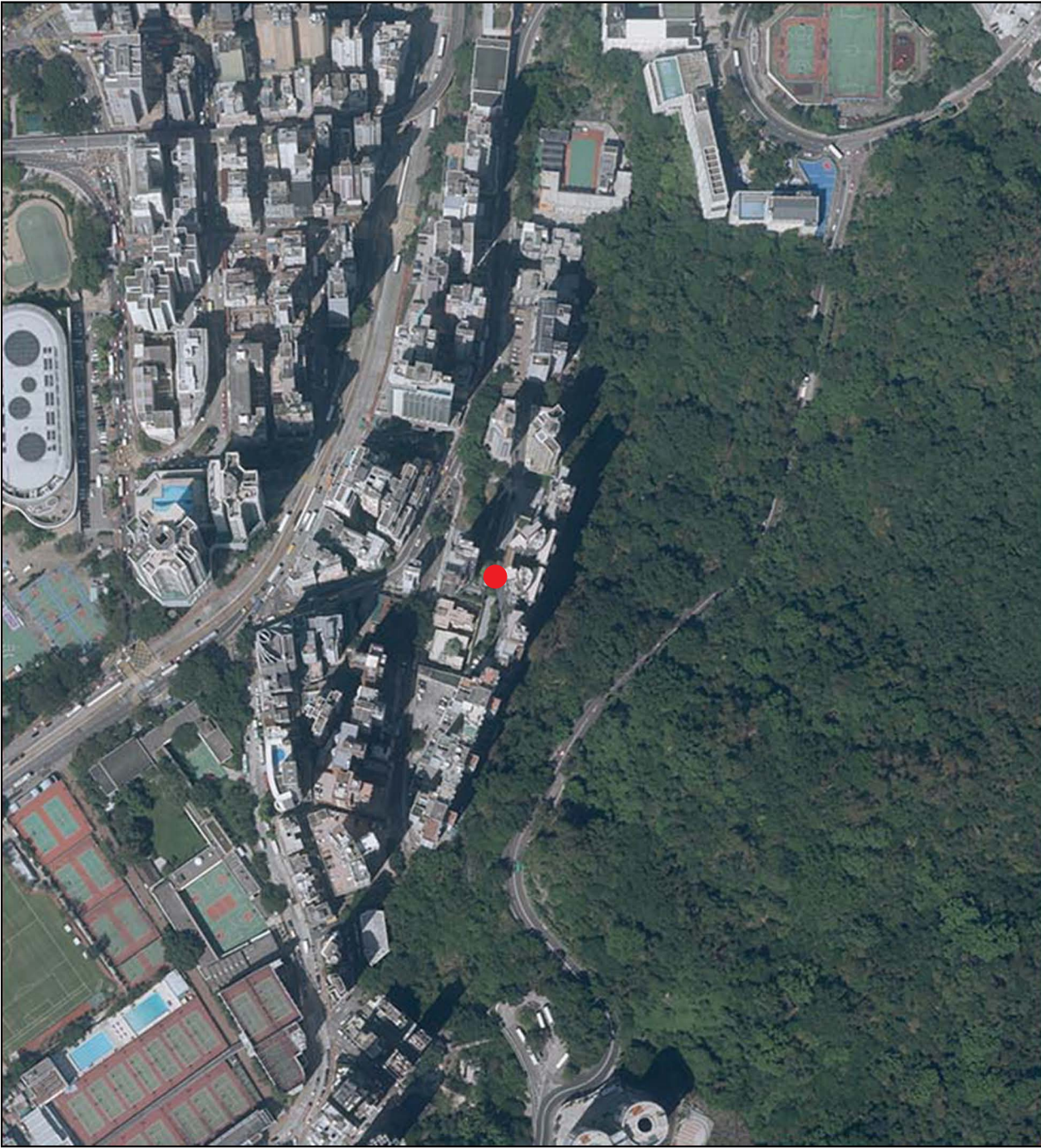
Adopted from part of the aerial photograph taken by the Survey and Mapping Office of Lands Department at a flying height of 6,000 feet, photo No. E071228C, dated 3 October 2019.  
摘錄自地政總署測繪處於2019年10月3日在6,000呎飛行高度拍攝之鳥瞰照片，編號為E071228C。



● Location of the Development  
發展項目的位置

Survey and Mapping Office, Lands Department, The Government of HKSAR © Copyright reserved - reproduction by permission only.  
香港特別行政區政府地政總署測繪處©版權所有，未經許可，不得複製。

Adopted from part of the aerial photograph taken by the Survey and Mapping Office of Lands Department at a flying height of 6,900 feet, photo No. E047292C, dated 5 October 2018.  
摘錄自地政總署測繪處於2018年10月5日在6,900呎飛行高度拍攝之鳥瞰照片，編號為E047292C。



Notes :  
1. The aerial photographs are available for free inspection during normal office hours at the sales office.  
2. Due to technical reasons as a result of the irregular boundary of the Development, the aerial photographs have shown more than the area required under the Residential Properties (First-hand Sales) Ordinance.

備註：  
1. 該鳥瞰照片存於售樓處，於正常辦公時間內供免費查閱。  
2. 因發展項目的不規則界線引致的技術原因，鳥瞰照片所顯示的範圍多於《一手住宅物業銷售條例》所要求。